



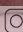

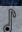
QUEENSWAY
ORTHODONTICS

Fixed brace patient, Julie

Invisalign patient, David

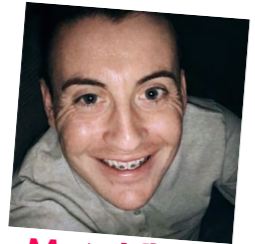
Queensway Orthodontics NEW PATIENT PACK

BILLINGHAM | BISHOP AUCKLAND | CONSETT | DARLINGTON | JESMOND | STOCKTON | SUNDERLAND | WASHINGTON | YARM

www.queenswayorthodontics.co.uk   @queenswaybraces  @queensway_braces

Brace options

To suit you and your lifestyle



Metal fixed



Ceramic fixed



Invisalign

METAL FIXED BRACES

Appliance types

Metal fixed appliances consist of small metal brackets attached to the front of the teeth. The wires are then used to move teeth into the desired position giving the orthodontist complete control over the tooth movements. There is also the option to choose coloured bands which are used to hold the wire in place.

CERAMIC FIXED BRACES

Ceramic fixed braces are similar to conventional fixed metal braces but are a more discreet option due to the brackets (small squares) being made from a clear material which blends in with the natural colour of your teeth, making them less visible.

If you want to straighten your teeth more discreetly than with conventional fixed metal braces, then ceramic braces could be the best option for you.

INVISALIGN - MOST DESIRED!

Invisalign offers a clear, comfortable way to straighten teeth without braces.

It's virtually invisible, so you can improve your smile discreetly. Plus, the aligners are removable, making eating and cleaning a breeze! Enjoy the journey to a confident smile with minimal fuss.

Diet and lifestyle

Care needed to avoid hard, sticky and chewy foods.

Care needed to avoid hard, sticky and chewy foods.

We recommend you do not drink anything hot, coloured, acidic or with a high sugar content when wearing aligners. Aligners should be removed for eating but you are able to drink COLD water and continue to play music and contact sports.

Treatment cost

From £2,689

From £3,379

From £3,705

Payment plans

- | | | |
|--|---|--|
| <ul style="list-style-type: none"> • Starting from £60.08 per month • Total treatment cost £3,604.80 • 60 months/£0 deposit | <ul style="list-style-type: none"> • Starting from £75.50 per month • Total treatment cost £4,530 • 60 months/£0 deposit | <ul style="list-style-type: none"> • Starting from £82.79 per month • Total treatment cost £4,967.40 • 60 months/£0 deposit |
|--|---|--|

*Representative Example: Total amount of Credit £2689.00. Total charge for credit £915.80 Total Amount Repayable £3604.80 Repayable by 60 monthly payments of £60.08. Representative 12.9% APR.

Example based upon dental procedure costing £2689.00 repayable over 60 months.

Payment options

Our private treatment options are designed to cater for all, ensuring your smile transformation is nothing short of magical. Enjoy competitive treatment prices and flexible payment options to make braces accessible to everyone.

Prices start from as little as £110.22 per month with a deposit. Additionally, we provide finance funding options with 0 deposit, though its essential to keep in mind that these plans include interest.

WE DON'T DO HIDDEN COSTS!

After your free consultation with one of our Treatment Coordinators, you will be presented with your personal treatment plan and a total cost. Our treatment fee includes:

- X-rays, photographs and a 3D treatment simulation of your teeth
- A care pack with all your brace care essentials
- Scheduled and emergency appointments
- 24 months' aftercare, including both fixed and removable retainers

FINANCE CALCULATOR
Want to look at how much the monthly repayment will be? [Click here.](#)

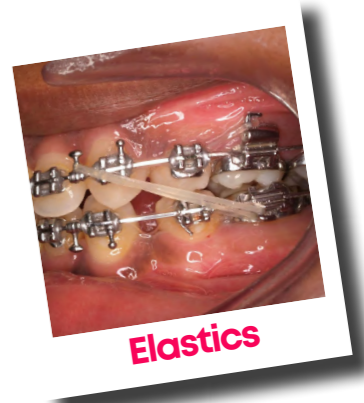
What to expect...

For most people having orthodontic treatment is very straightforward and fits seamlessly with their lifestyle. Some tenderness can be experienced when the braces are fitted or adjusted. Occasionally, patients may suffer from soreness or rubbing of the cheeks or lips. Two or three days after fitting this usually reduces considerably - but can take one to two weeks to disappear completely in some cases.

As part of making your treatment as successful as possible, you may require one or more of the following techniques to be used to help improve the outcome of your treatment and ensure you achieve the best possible results.

Speech

Unless you are wearing a palatal expander or removable upper brace as part of your treatment, speech is not generally affected by a conventional fixed brace.



Elastics



IPR



Bite turbo

Treatment techniques

Elastics and buttons

To correct the bite it may be necessary to wear elastics between the upper and lower teeth. Elastics are attached to hooks on a fixed brace. Without elastics treatment will take longer and may be less successful. Elastics can be removed for eating and cleaning but would normally need to be in place for 22 out of 24 hours per day.

If you need more elastics at any stage all you need to do is ask or visit www.bracebrushes.co.uk to order some more.

Interproximal Reduction (IPR)

Interproximal reduction is the gentle and scheduled removal of a very small amount of the outer layer of enamel from between the teeth. It can be recommended to improve the outcome of your treatment by creating space or reducing the appearance of 'black triangles' between the teeth where these may be a problem (usually in adults or patients with a certain tooth shape). The technique is carried out using fine, diamond coated strips between the teeth. More information about IPR will be given to you by your orthodontist and on your consent form which will be given to you prior to treatment.

Bite opening

Sometimes your orthodontist needs to add temporary pads to the chewing surface of the teeth to "prop the bite" open. These pads protect the brace as well as speeding up the brace treatment but can make it difficult to chew at the beginning.

During treatment

Who will I see?

During treatment you will be looked after by a trained, friendly and experienced member of our Specialist Led Orthodontic team.

This will include Orthodontic Therapists who perform many of the hands on procedures required within your plan (including adjusting, fitting and removing braces), Orthodontic Nurses who take the digital scans and photographs of your teeth, as well as being experts at giving guidance and information about your treatment.



Hygiene appointments at QO!

At QO, we know that healthy and strong teeth are key to a confident smile. That's why, we are delighted to offer our patients hygiene appointments with our experienced hygienist, Leigh.

We have three bespoke packages – no matter what your smile goals are you can find the perfect package for you!

- **Starter package** £95 including scale and polish
- **Premium package** £145 including scale, polish and airflow
- **Elite package** £539 including scale, polish, airflow and tooth whitening

See the smiles that have benefited from a scale and polish [here!](#)

Benefits of a regular scale and polish are:

- deep cleaning, scaling and polishing
- removes plaque and stains
- provides you with vital preventative care
- helping your teeth and gums to stay healthy

Simply call 01642 352440 to book and achieve a sparkling smile!

"I had a scale and polish with Leigh and Charlotte. They both made me feel so welcome even though I am terrified of the dentist. They were so lovely and were so gentle. 10 out of 10 from me!"

"I had a scale and polish with Leigh and Charlotte today and it's the best my teeth have ever felt!"

"I'm happy with my teeth! Had a scale and polish and I am really happy with the result! Leigh and Charlotte did a really good job today!"

Spread the cost of your hygiene packages from as little as £14 per month!



STARTER

FREE Oral B electric toothbrush

Scale and polish clean at the start and end of treatment

End of treatment airpolish*

Payment plans

£21 per month over 12 months / £14 per month over 18 months

Total cost £252

*The most effective airflow therapy treatment to remove persistent stains and discolouration!



DELUXE

FREE Oral B electric toothbrush

Scale and polish clean at the start, middle and end of treatment

Three airpolish cleans*

Vitis oral health top up pack

Payment plans

£33 per month over 12 months / £22 per month over 18 months

Total cost £396



PLATINUM

FREE Oral B electric toothbrush

Scale and polish clean at the start, middle and end of treatment

Three airpolish cleans*

Three Vitis oral health top up packs

Tooth whitening or whitening top up*

Vivera retainers or R4L voucher worth £150!

Payment plans

£62.25 per month over 12 months / £41.50 per month over 18 months

Total cost £747

*Tooth whitening subject to whitening assessment for over 18s only.

After treatment ...and finishing touches

Orthodontics is an excellent way of straightening teeth as well as improving the smile and bite. Sometimes however, finishing touches are necessary to improve the shape or colour of the teeth and create the best possible outcome.

The simplest of these techniques is to adjust and smooth any rough or uneven enamel edges. If this is not sufficient then composite bonding (tooth coloured fillings) can be used to replace any worn or chipped areas. Tooth whitening remains a popular choice with patients at the end of treatment and can be combined with composite bonding for the most refined outcome.*

Feel free to talk to us or your family dentist about these options so that we can guide you and make the appropriate arrangements.

Restorative Treatment*

Following removal of their appliances, some patients will go on to have restorative treatment such as tooth whitening, crowns, bridges, veneers or implants. If such a restorative phase is required or requested we will be delighted to work with a dentist of your choice to ensure the best possible outcome.

*Please note these options are not carried at Queensway Orthodontics and will incur additional charges over and above the cost of any orthodontic treatment.

Online shop - Bracebrushes.co.uk

We have developed an online store to help our patients purchase their brace accessories and consumable supplies more easily as well as our carefully chosen selection of products to a wider audience.

If you run out of any of your brace care supplies essential for your treatment such as replacement elastic bands or toothpaste, you can simply go online and purchase!

End of treatment

At the end of all orthodontic treatment is the retention phase. There is a natural tendency for teeth to move once treatment has finished. To prevent this relapse occurring, it is extremely important to understand what to do when your braces are removed. This is critical in ensuring that your teeth will look as good in years to come as they do on the day your braces are removed.

A retention programme is individually tailored for each patient, but usually comprises of removable clear retainers for night time use with or without fixed retainer wires, behind the front teeth. These retention appliances are designed to hold the teeth in place once braces are removed and are very simple to wear and maintain.

Removable retainers

Removable retainers are made of a clear, thin plastic material that is very discreet. For the first three weeks after your braces have been removed, the removable retainers may need to be worn 24 hours a day (removed only for eating and cleaning). Your orthodontist will advise you on this. Following this, your retainer should be worn at night indefinitely on a reducing schedule that we will explain to you.



Bonding



Whitening



Jeremy



Replacement retainers

Share your smile!

At Queensway Orthodontics, we love to see our patients beam with confidence. Whether you are in the middle of treatment and loving your results, or if you are finished treatment and love your new smile - don't forget to share it with us! All you need to do is simply snap a selfie, tag us on Facebook or Instagram* - and you could win a £50 shopping voucher!

*Due to privacy settings we may not see your tag - not to worry DM us your pic and we'll do the rest!



Visit our [website](#) for amazing patient stories and follow us on Instagram [@queenswaybraces](#)

★★★★★
Over 1,450+ five-star reviews on [Facebook](#) and [Google!](#)



“When it comes to work now my smile says it all. I love what I do, and I feel like my smile shows just that now. Having Invisalign means that every customer that walks through the door is greeted by a gleaming smile and quirky glasses 6 days a week.”

Amy, Blondie Baker